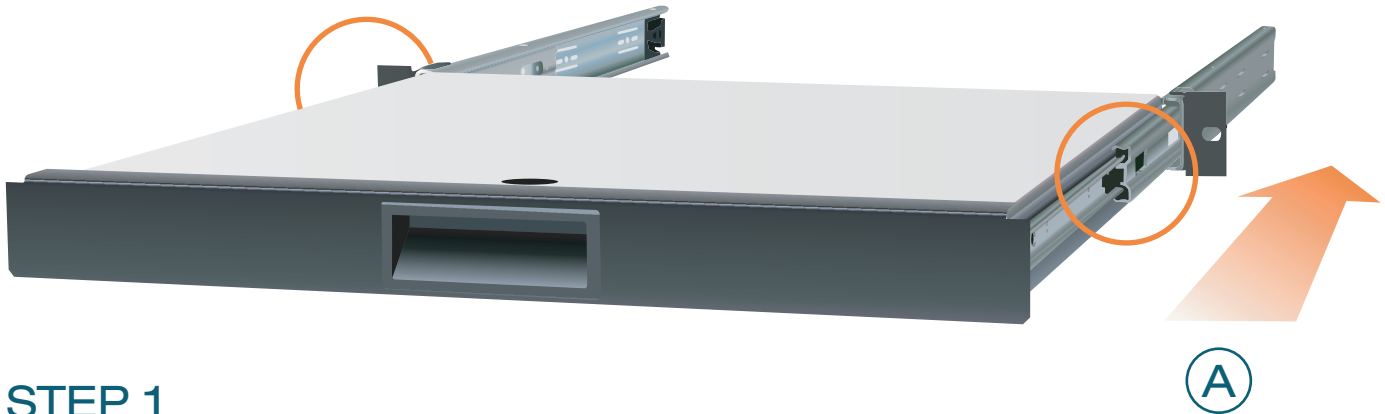


# Telescopic Desk



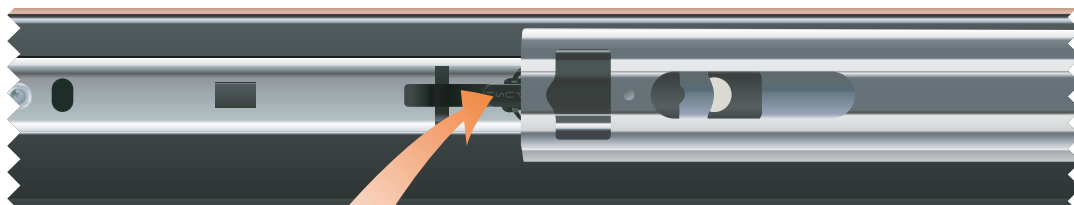
## STEP 1

REMOVE TELESCOPIC RAIL FROM UNIT BY:

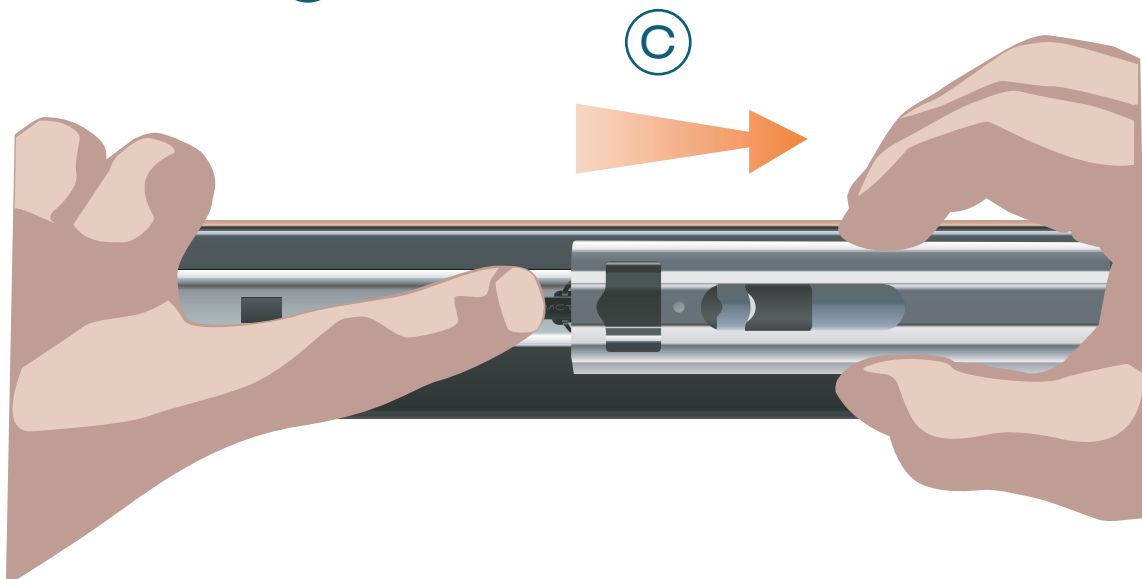
A, SLIDING TELESCOPIC RAIL ALL THE WAY BACK

B, RELEASE TELESCOPIC RAIL BY DEPRESSING BLACK PLASTIC CATCH

C, SLIDING TELESCOPIC RAIL ALL THE WAY OFF



(B)



(C)



# Telescopic Desk 2

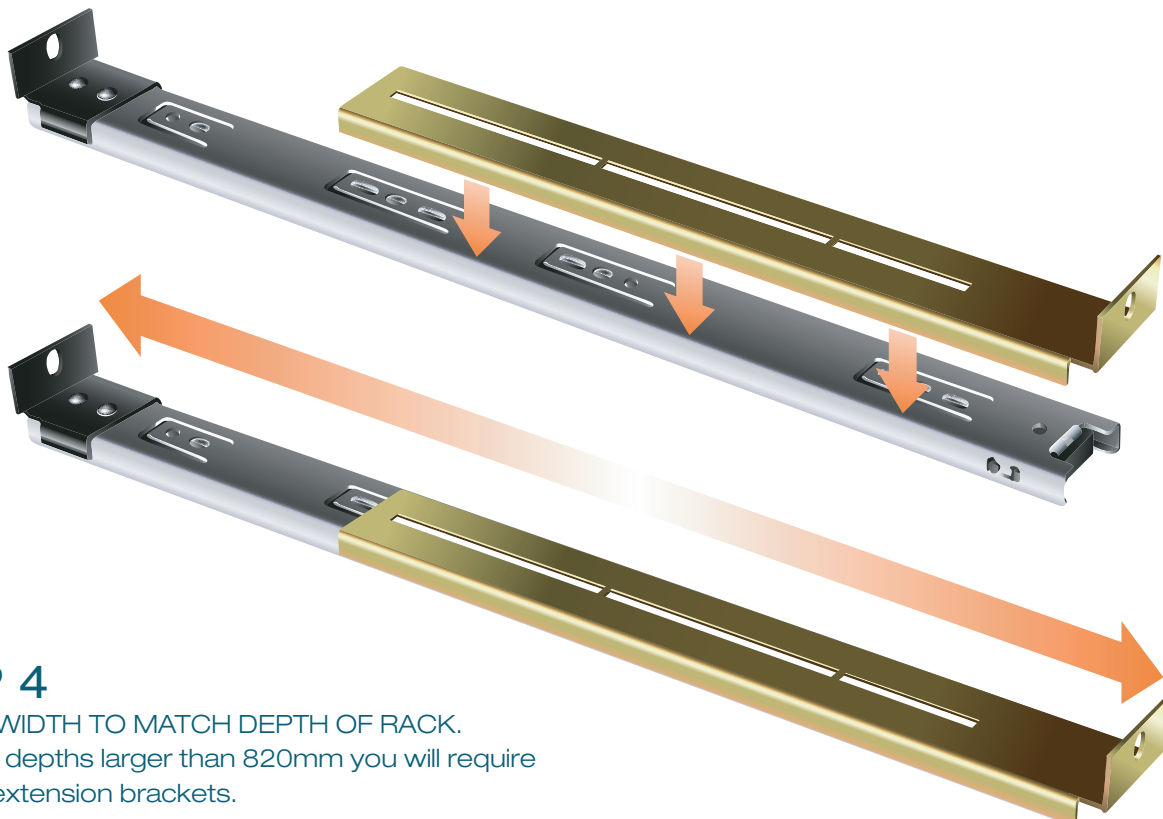
## STEP 2

POSITION CAGE NUTS FACING OUTWARDS INTO CENTRE HOLE OF RU ON ALL VERTICAL MOUNTING RAILS



## STEP 3

CLIP TELESCOPIC RAIL ONTO EXTENSION BRACKET



## STEP 4

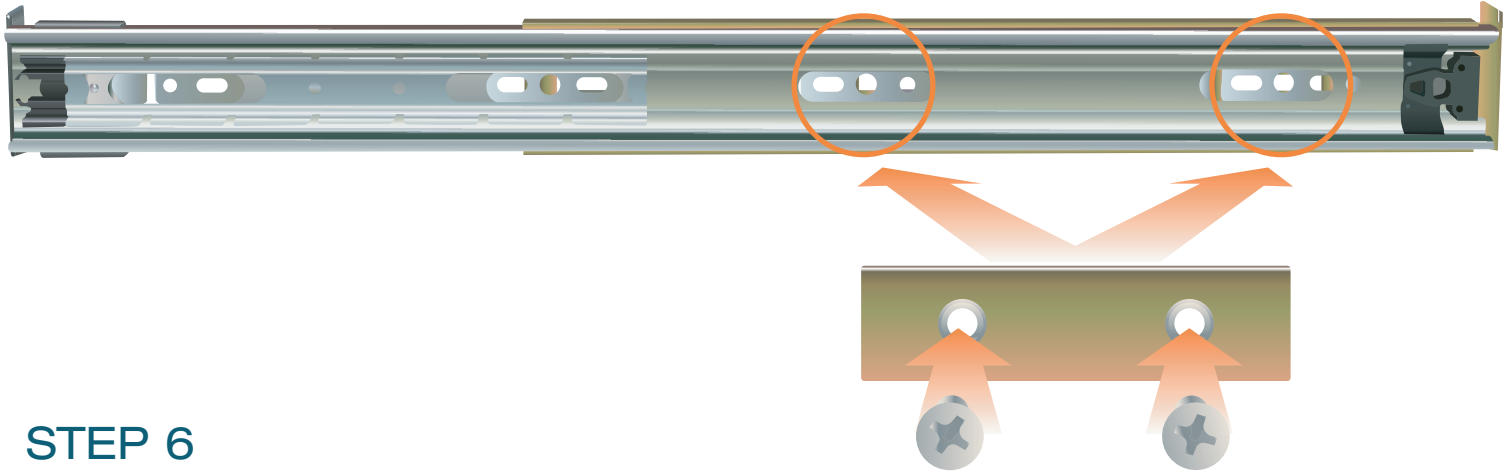
EXTEND WIDTH TO MATCH DEPTH OF RACK.  
 Note: For depths larger than 820mm you will require the long extension brackets.

MFB PRODUCTS PTY LTD  
 ABN 63 004 939 860

# Telescopic Desk 3

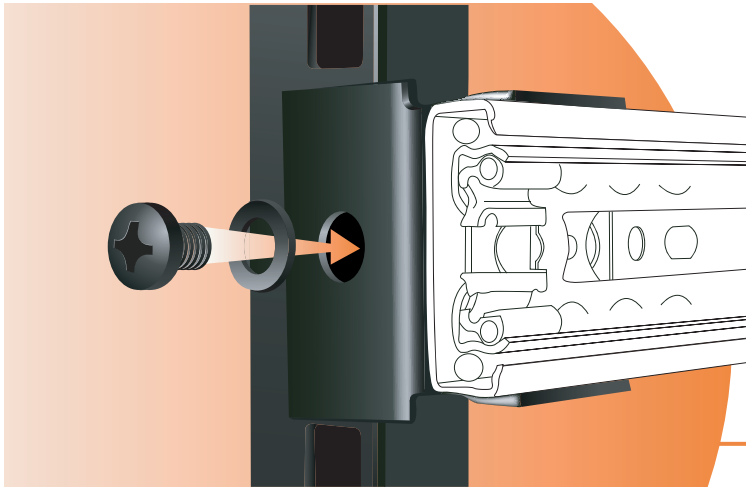
## STEP 5

FIND UNOBSTRUCTED MOUNTING POINT ALONG INSIDE OF TELESCOPIC RAILS  
 IN ONE OF THE SLOTTED POINTS ILLUSTRATED BELOW.  
 SECURE RAIL VIA SMALL SCREWS (FROM INSIDE) TO MOUNTING BRACKET (OUTSIDE).



## STEP 6

MOUNT SLIDE ASSEMBLY WITH SMALL  
 MOUNTING BRACKET FACING FRONT  
 OF RACK. SECURE FRONT & REAR



## STEP 7

INSERT TELESCOPIC SHELF INTO TELESCOPIC RAILS  
 FROM FRONT OF RACK. AFTER INSERTING COMPLETELY,  
 WITHDRAW SHELF TO ENSURE IT HAS LOCKED INTO PLACE.

